



Copperleaf Homes

The Bristol

The Home

This Tuscan Style home in the Spires at the Broadmoor depicts the very core of that nostalgic century of the old - love of beauty and style, simplistic function, and superior artistic craftsmanship, which was expressed so elegantly throughout every village and

home in Tuscany . It shows a warm and comfortable atmosphere with vibrant colors, earthen accents, and solid wood furniture, that all invoke a sense of comfortable familiarity with the past.



Copperleaf Homes

The elements of wood, earth, stone, and water are a common theme of Tuscan villa interiors and outdoors throughout the Italian country landscape. The home features comfortable living with an inviting interior, introducing fresh flowers and nature indoors complete with an indoor water feature. It also offers a naturally refreshing exterior veranda complete with waterfall and fireplace, and gardens of wild flowers, to offer a relaxed gateway to the outdoors.

The home represents the Tuscan way of living; a relaxed way of living - not flashy or pretentious, with a focus on finding love and beauty in things most important: family and friends.

The Builder

Copperleaf Homes is a Colorado company dedicated to creating homes that will stand the test of time. Founded by a group of successful and diverse individuals who share a passion for quality homes, Copperleaf Homes offers innovative home design that reflects values and respect for our customers which is extraordinary in the industry.

At Copperleaf Homes, our commitment to offer both exceptional value and quality never rests. We are a focused, customer-driven builder dedicated to creating a home of lasting value and beauty. We understand the importance of giving our customers the personal attention and involvement that ensures a memorable and rewarding home ownership experience.

Copperleaf Homes offers eleven stunning floor plans in our semi-custom portfolio which can be built to suit your individual needs. If you're looking for a custom home, we will arrange for you to meet with our architect to develop a one of a kind plan to build on one of the lots that we have available or on a lot of your choice.

Interior Design

Coterie Interior Design is a team of designers with over 20 years experience serving the Colorado Springs area. Marla and Amy offer a professional approach to interior design, offering comprehensive services including space planning, architectural review, and Auto Cad. They have a strong commitment to meeting the client's needs, sharing their knowledge and experience, while maintaining the overall design integrity of the project. Their creative and unique approach to design and detail, takes the stress out of the process, and makes the experience enjoyable! The end result is a beautiful, functional, and comfortable space to live in.

Trade Partners

AAA Gutters	Eagle Plastering	Mibar Engineering	Weber Construction
Advance Concrete	Entech Engineering	Peakview Roofing	Western Drain
AIM Higher Cleaning	Extreme Landscapes	Positive Electric	Windowations & Elegant Finishes
Ankmar Garage Doors	Ferguson supply	Premier Drywall	
Arctic Spas	Foxworth Galbraith Trusses	Ramons Painting	
Aspen Land	Friend Climate Control	Repairs Unique	
Atrium Windows and Doors	Front Range Fireplaces	S & B Porta Bowl	
Bella Giardino Landscape and Garden Design	GLC Fire Prevention	Schmallen and Associates	
Builders Showcase Interiors	Home Builder Services	Schroll Cabinets	
Bush Excavation	Home Run Electronics	Silver & Blue Concrete	
C & C Sand and Stone	Insulations Inc.	Unique Radiant Heating & Plumbing	
Coterie Interior Designs	Interior Trim and Supply	United Site Services	
Dirt Cheap Grading	LGA studios	Water Returns	
	La Z Boy Furniture Galleries		

The Bristol

Square Footage

Total: 4,600

Finished: 4,600

Home Price

\$561,000

Base Price

Designer

LGA Studios

Landscaper

Bella Giardino

Financing

Compass Bank

Address

350 Irvington Court
Colorado Springs

Map Site 11

Floorplan

5 Bedrooms

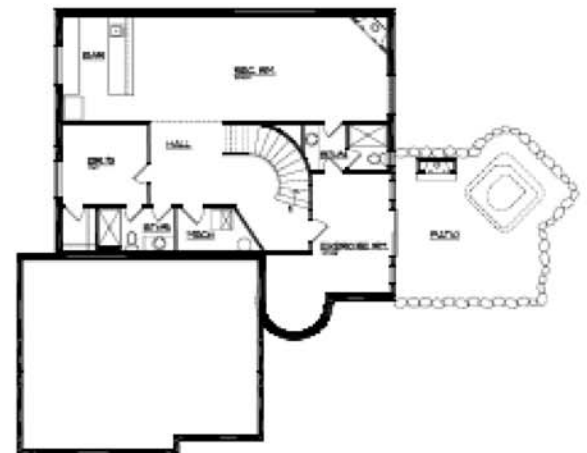
5.5 Bathrooms



FIRST LEVEL FLOOR PLAN
02/20/11 117



UPPER LEVEL FLOOR PLAN
02/20/11 118



LOWER LEVEL FLOOR PLAN
02/20/11 119