

Dear Respective Customers:

Removal of Irrigation Backflow Prevention Assemblies

Over the past few years, Colorado Springs has experienced an increase in backflow prevention thefts. To this end, Colorado Springs Utilities has been working with affected customers as well as representatives from the irrigation and plumbing industry to develop a possible solution to this problem.

**Regulatory Requirements:** Hazardous Cross-Connections, which backflow prevention assemblies are intended to address, are regulated under the Colorado Primary Drinking Water Regulations. Under these same regulations Colorado Springs Utilities is required to maintain maintenance records for assemblies that are subject to these regulations. Should further guidance from the State be forthcoming, additional reporting requirements (e.g., notification to the Utilities that assembly has been removed) may be implemented.

**Technical Requirements:** Below is the recommendation for a typical removed backflow prevention assembly, for all sizes of backflow. This would only apply to seasonal irrigation installations. In these instances where removal of the assembly is requested, flanges must be installed on both future and existing stub and backflow assemblies. The lower stub flange ring, within the enclosure, shall be located to within four (4") inches of the concrete pad as illustrated on figure 1. During the removal period, the valve on the supply side shall be shut and the pipe stubs shall be capped or plugged with a bolted blind flange.

Prior to irrigation, the backflow prevention assembly shall be reinstalled and tested in accordance with State Backflow Regulations and the current version of the Water Line Extension and Service Standards.

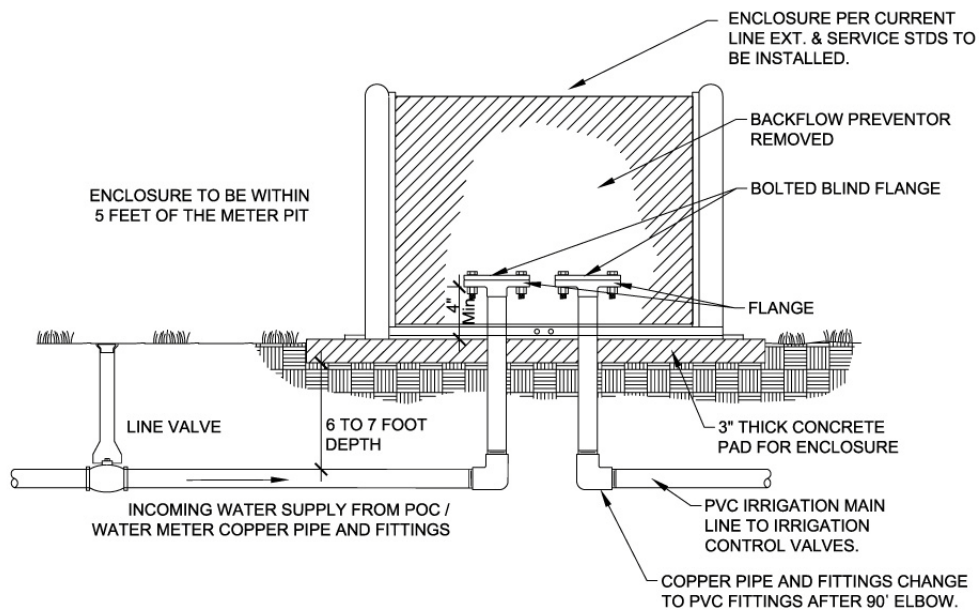


Figure 1 - Blind flange assembly configuration

Specification:

Flange: Nibco Flange – Class 150, Cast bronze threaded fitting in accordance with ANSI/ASME B16.15, or similar approved by Colorado Springs Utilities.

Gasket: Rubber (This would be replaced on an annual basis at the beginning of the new irrigation season)

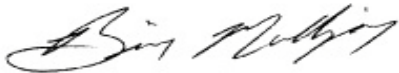
Bolts, nuts and washers: Stainless steel, type 304

Blind Flange: High Strength Plastic cap – Schedule 60 or similar approved by Colorado Springs Utilities. (During the winter or off season for irrigation)

Stub out pipe: Silver painted.

Colorado Springs Utilities appreciates your consideration as these changes are implemented, and should you have any question, please do not hesitate to call or email me.

Sincerely,

A handwritten signature in black ink, appearing to read "Brian Mulligan". The signature is fluid and cursive, written in a professional style.

Brian Mulligan, P.E.

Water and Wastewater Engineering Standards,

Colorado Springs Utilities

Tel. No. 668-8260,

Email : [bmulligan@csu.org](mailto:bmulligan@csu.org)